

Social Capital as a form of Community Capital

-
Cornerstone Village
in Santa Ana/ Orange County



NEURUS Seminar 2004
Cornelia Rahn

UCIrvine
University of California, Irvine

Content

- I. Research Question
- II. Background
 1. Local Background
 2. Theoretical Background
- III. Research Design
- IV. Results



NEURUS Seminar 2004
Cornelia Rahn

UCIrvine
University of California, Irvine

I. Research Question

How is “social capital“
involved in the
neighborhood revitalization
process?



NEURUS Seminar 2004
Cornelia Rahn

UCIrvine
University of California, Irvine

II.1 Local Background

Why **Santa Ana** in **Orange County**?

Orange County

- Demographic and economic changes
- In the past: “middle class suburbia“
- During the 1990s:
Destination of many immigrants
→ Challenges



NEURUS Seminar 2004
Cornelia Rahn

UCIrvine
University of California, Irvine

II.1 Local Background

Why Santa Ana in Orange County?

Orange County

- Demographic and economic changes
- In the past: “middle class suburbia”
- During the 1990s: Destination of many immigrants
→ Challenges

Santa Ana

- 76,29% Hispanic origin
- Poor reputation
- Strong neighborhood-based planning

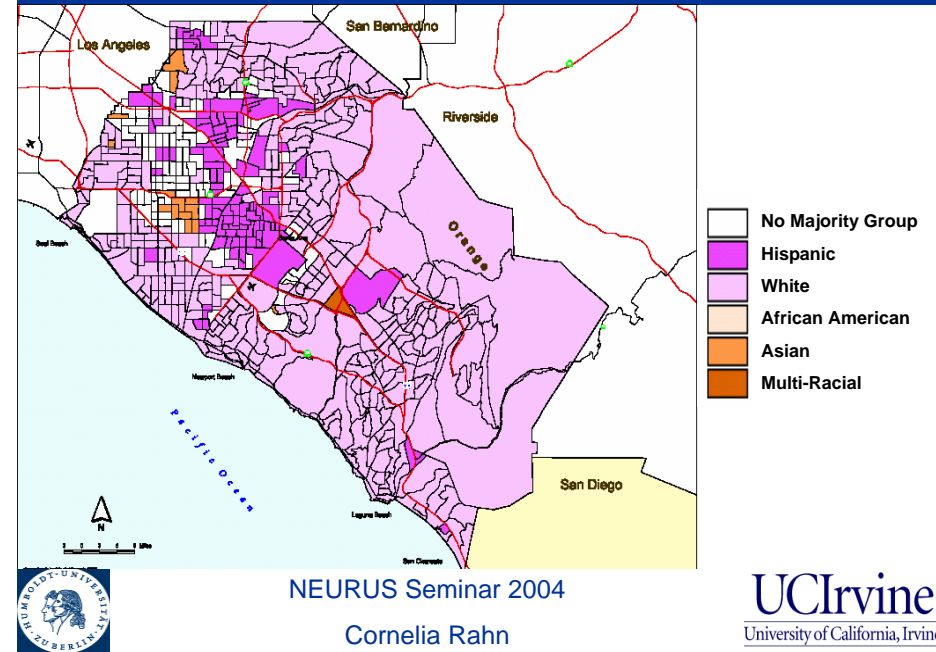


NEURUS Seminar 2004

Cornelia Rahn

UCIrvine
University of California, Irvine

II.1 Local Background



NEURUS Seminar 2004

Cornelia Rahn

UCIrvine
University of California, Irvine

II.1 Local Background

Minnie Street/ Cornerstone Village

- Positive example of neighborhood revitalization
- In the past: one of Santa Ana’s “toughest neighborhoods”
- Today: nice, clean neighborhood
- Changed the name from Minnie Street neighborhood to Cornerstone Village



NEURUS Seminar 2004

Cornelia Rahn

UCIrvine
University of California, Irvine

II.1 Local Background

Minnie Street/ Cornerstone Village

History

- Around 1960: Minnie Street area was built as off-base housing for Marines
- In the 1970s: Apartment buildings were sold to private owners → decay of the area

Facts today

- Minnie Street is home to 4,000 residents
- 75% Latinos, 25% Cambodians
- Rents range from \$500 - \$700 per month



NEURUS Seminar 2004

Cornelia Rahn

UCIrvine
University of California, Irvine

II.1 Local Background

Components of Revitalization

- 1994: Minnie Street Coalition was formed
- 1996: Santa Ana City began a program to improve the Minnie Street's physical environment
→ \$6,5 million for stairways, decks, parkways, sidewalks



NEURUS Seminar 2004
Cornelia Rahn

UCIrvine
University of California, Irvine

II.1 Local Background



NEURUS Seminar 2004
Cornelia Rahn

UCIrvine
University of California, Irvine

Research Question

How is “social capital”
involved in the
neighborhood revitalization
process?



NEURUS Seminar 2004
Cornelia Rahn

UCIrvine
University of California, Irvine

Questions

- I. How does a neighborhood planning process incorporate concepts of “social capital” in its community revitalization programs?
To what extent can planning create “social capital” in a neighborhood?



NEURUS Seminar 2004
Cornelia Rahn

UCIrvine
University of California, Irvine

Questions

- I. How does a neighborhood planning process incorporate concepts of “social capital“ in its community revitalization programs?
To what extent can planning create “social capital“ in a neighborhood?

- II. How do residents in a revitalized neighborhood experience “social capital“?



NEURUS Seminar 2004

Cornelia Rahn

UCIrvine
University of California, Irvine

II.2 Theoretical Background

Community Development

Planned effort to produce assets that increase the capacity of residents to improve their quality of life.



NEURUS Seminar 2004

Cornelia Rahn

UCIrvine
University of California, Irvine

II.2 Theoretical Background

Community Capital

Five forms

1. Physical Capital
2. Human Capital
3. Social Capital
4. Financial Capital
5. Environmental Capital



NEURUS Seminar 2004

Cornelia Rahn

UCIrvine
University of California, Irvine

II.2 Theoretical Background

Community Capital

Five forms

1. Physical Capital
2. Human Capital
3. **Social Capital**
4. Financial Capital
5. Environmental Capital



NEURUS Seminar 2004

Cornelia Rahn

UCIrvine
University of California, Irvine

II.2 Theoretical Background

Social Capital

“Social capital [here] refers to features of social organisation, such as trust, norms and networks, that can improve the efficiency of society by facilitating coordinated action.”

(Putnam 1993: Making Democracies Work, Civic Traditions in Modern Italy.)



NEURUS Seminar 2004

Cornelia Rahn

UCIrvine
University of California, Irvine

III. Research Design

I. Statistics Review

Available Dates of the Neighborhood: amount of residents, level of income

II. Literature Review

About Santa Ana, Cornerstone Village, Community Capital, Social Capital

III. Interviews

1. Experts
2. Residents

IV. Results/ Evaluation



NEURUS Seminar 2004

Cornelia Rahn

UCIrvine
University of California, Irvine

III. Research Design

I. Statistics Review

Available Dates of the Neighborhood: amount of residents, level of income

II. Literature Review

About Santa Ana, Cornerstone Village, Community Capital, Social Capital

III. Interviews

1. Experts
2. Residents

IV. Evaluation



NEURUS Seminar 2004

Cornelia Rahn

UCIrvine
University of California, Irvine

III. Research Design

Possible questions to ask the experts:

- What do you think was the most important to change in the Minnie Street Neighborhood?



NEURUS Seminar 2004

Cornelia Rahn

UCIrvine
University of California, Irvine

III. Research Design

Possible questions to ask the experts:

- What do you think was the most important to change in the Minnie Street Neighborhood?
- What is your definition of “social capital“?



NEURUS Seminar 2004

Cornelia Rahn

UCIrvine
University of California, Irvine

III. Research Design

Possible questions to ask the experts:

- What do you think was the most important to change in the Minnie Street Neighborhood?
- What is your definition of “social capital“?
- To what extent did you plan to improve “social capital“ in the neighborhood?



NEURUS Seminar 2004

Cornelia Rahn

UCIrvine
University of California, Irvine

III. Research Design

Possible questions to ask the experts:

- What do you think was the most important to change in the Minnie Street Neighborhood?
- What is your definition of “social capital“?
- To what extent did you plan to improve “social capital“ in the neighborhood?
- Which were the most important design changes in the physical environment?



NEURUS Seminar 2004

Cornelia Rahn

UCIrvine
University of California, Irvine

III. Research Design

I. Statistics Review

Available Dates of the Neighborhood: amount of residents, level of income

II. Literature Review

About Santa Ana, Cornerstone Village, Community Capital, Social Capital

III. Interviews

1. Experts
2. Residents

IV. Results/ Evaluation



NEURUS Seminar 2004

Cornelia Rahn

UCIrvine
University of California, Irvine

III. Research Design

Possible questions to ask the residents:

- Do you like your neighbors? Do you trust them?



NEURUS Seminar 2004

Cornelia Rahn

UCIrvine
University of California, Irvine

III. Research Design

Possible questions to ask the residents:

- Do you like your neighbors? Do you trust them?
- If it was possible to move away from here – would you do this?



NEURUS Seminar 2004

Cornelia Rahn

UCIrvine
University of California, Irvine

III. Research Design

Possible questions to ask the residents:

- Do you like your neighbors? Do you trust them?
- If it was possible to move away from here – would you do this?
- Do you think that it is important to have a good relationship between the neighbors?



NEURUS Seminar 2004

Cornelia Rahn

UCIrvine
University of California, Irvine

III. Research Design

Possible questions to ask the residents:

- Are you a member of an organization located in your neighborhood?



NEURUS Seminar 2004

Cornelia Rahn

UCIrvine
University of California, Irvine

III. Research Design

Possible questions to ask the residents:

- Are you a member of an organization located in your neighborhood?
- If you had personal or economic problems – would you know an organization/ institution located in the neighborhood that could help you?



NEURUS Seminar 2004

Cornelia Rahn

UCIrvine
University of California, Irvine

III. Research Design

Possible questions to ask the residents:

- Are you a member of an organization located in your neighborhood?
- If you had personal or economic problems – would you know an organization/ institution located in the neighborhood that could help you?
- Is there a public space now you can use for meetings with neighbors/ friends which was not there before?



NEURUS Seminar 2004

Cornelia Rahn

UCIrvine
University of California, Irvine

IV. Results

Responses to my questions

- How does a neighborhood planning process incorporate concepts of “social capital” in its community revitalization programs?
To what extent can planning create “social capital” in a neighborhood?
 - II. How do residents in a revitalized neighborhood experience “social capital“?
- **Understanding of the part of “social capital” in the revitalization process**



NEURUS Seminar 2004

Cornelia Rahn

UCIrvine
University of California, Irvine

Social Capital as a form of Community Capital

-
Cornerstone Village
in Santa Ana/ Orange County



NEURUS Seminar 2004

Cornelia Rahn

UCIrvine
University of California, Irvine